



*Flo-Gym*TM



RESPIRATORY FLOW INCENTIVE
IN/OUT WITH PROGRESSIVE RESISTORS

KOO



*Flo-Gym*TM

RESPIRATORY FLOW INCENTIVE IN/

- For inhalation and exhalation
- Two independent adjustable valves allow a progressive resistance in the breathing phases
- Disassemblable for easy cleaning
- Connection port with pressure control manometer

Indications:

- Post surgical rehabilitation
- COPD
- Bronchial asthma
- Pulmonary hypertension



Ergonomic design and high retention surface for easy patient handling

OUT WITH PROGRESSIVE RESISTORS

Exhalation resistance regulation valve
(from 1 to 4 degrees)

Airway pressure monitoring port



Disassemblable for easy cleaning

Inhalation resistance regulation valve
(from 1 to 4 degrees)

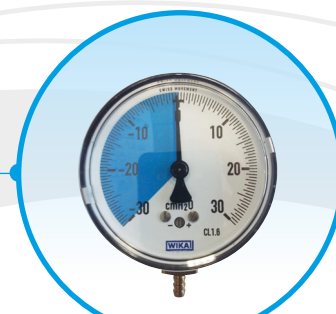




Flo-Gym



Tri-Gym



Manometer

Code	Description	Items per box
KM-802	Flo-Gym	1
KM-805	Tri-Gym	1
Accessory		
57303499	Manometer -30+30cmH2O	1
KM-8032	«T» connector with 50 cm tube	50

Koo Medical Equipment (shanghai) Co.Ltd.

100 Zhongde R., Road Dakun Industrial Park, Songjian, Shanghai 201614 P.R.China

Distributed in EMEA by

Koo Europe srl

Viale delle industrie 5 20020 Arese MI tel. 0039 02 93589495

Info@kooeurope.com

Distributed in Asia Pacific by

Koo Asia Ltd.

Unit 23 9, floor Goodwill Ind. Building No.36-44 Tin Pa Street Tsuen Wan N.T. Hong Kong tel 0085221104780

sales@koo-asia.com