

Spirotel®

**Telespirometer plus Oximeter
in a single device**



Ideal in Telemedicine for

- **Screening in the doctor's office**
- **Home Care monitoring**

New options with embedded GSM and Bluetooth® Modules

- **Spirotel® can transfer the results wireless**

Simple connection to a Telemedicine Center or Web Server

- **No modem**
- **No wires**
- **No problems**

Spirotel®

The new healthcare frontier:
the Virtual Clinic



Remote spirometry

Spirotel records all the major spirometry parameters including FVC, FEV1, FEV1%, PEF, FEFE-25-75, FET, Flow/Volume curve, date and time of the test, symptoms, the response to the various (programmable) questions plus other useful information.

Thousand of complete tests can be stored.

The device can be used both by the Doctor for screening and monitoring the Patient at home connected by the embedded GSM to the Specialist.

Telemedicine made simple

The transmitted data is received by a remote Server. The Doctor can connect to this Server at any time and automatically access all the new test data transmitted by the Patients.

A complete system of monitoring and health management

It has been shown that when Patients receive the correct training they are able to accurately make both Spirometry and Oxymetry testing in their own home, with results which correspond very closely indeed to those obtained in a lung function laboratory.

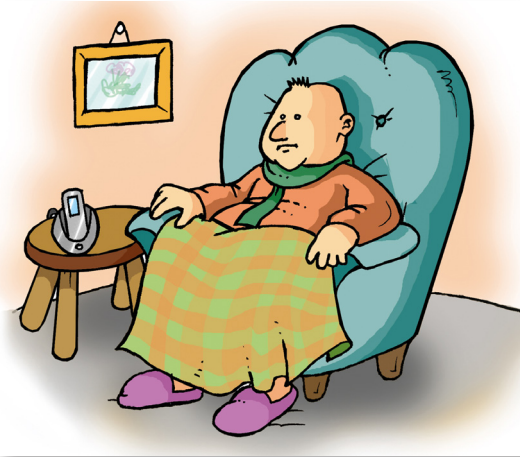
The resulting test data can be accessed by the Doctor enabling him/her to study the measured parameters plus the symptoms and other information, therefore enabling the Doctor to quickly monitor the Patient.

The concept of Virtual Clinic functions, wherever the Doctor is based, thus frees up the Doctor's time while at the same moment enabling the health service to improve their service and reduce costs, with a reduction of in-patients as well as day-hospital visits.

This remote monitoring of chronic pathology also provides the Patient with maximum freedom and convenience and educates them towards better personal management of the disease, reducing chronic episodes and thus increasing the Patient's quality of life.

The software in the Doctor's PC then supplies both tabular and graphic information, designed to quickly highlight the quality of health for each Patient, by colour-coded classification (green, yellow and red).

This enables the Doctor to make a simple and rapid interpretation and also to share the data with other Doctors/Medical Organizations.



Doctor spirometry

Spirotel can be used by the Patient at home or at work, wherever, and transmits the result via embedded GSM Module or via Bluetooth®.

Optional oximetry

With the oximetry option, Spirotel is able to record the values of SpO₂ as well as heart rate (for instance overnight, with one reading stored each 2 seconds).

Spirotel[®]

Technical specification Spirotel[®]

Dimensions: 92x88x38mm
Weight: 124g
Flow sensor: Turbine with infrared interruption
Power supply: Lithium ion 3.7V, 1100mA rechargeable
Display: graphic LCD Backlit with touchscreen
(resolution: 160x80)
Data transmission: USB 2.0
option available: Bluetooth[®], GSM
Spirometry test duration: maximum 60s
Flow range: ± 16 L/s
Flow accuracy: $\pm 5\%$ o 200mL/s, whichever is greater
Volume accuracy: $\pm 3\%$ o 50mL, whichever is greater



Technical specification Oximeter

SpO2 range: 0-99%
SpO2 accuracy: $\pm 2\%$ between 70-100% SpO2
Heart rate range: 20-300 BPM
Heart rate accuracy: ± 2 BPM or 2%, whichever is greater