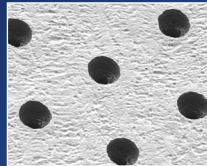


Modern nebuliser therapy is twice as fast!

The eFlow[®]rapid delivers approved medications deep into the lungs rapidly and highly efficiently by inhalation. The administered dose is comparable with that of the PARI LC PLUS[®] nebuliser. A soft aerosol cloud is generated continuously and can be inhaled calmly. When all the medication has been nebulised, the device switches itself off automatically.

How does it work?

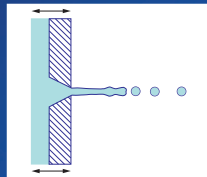
The heart of the patented technology is a perforated steel membrane.



Membrane magnified approx. 100x

How is the aerosol generated?

The inhalation solution is forced through the perforated steel membrane, which is vibrating gently (117 kHz).



Cross section of the membrane

The advantages at a glance:

- Short treatment times for better quality of life
- Quiet running for discreet use
- Light, compact, portable, runs on mains power, or batteries (rechargeable or standard) for greater mobility
- Aerosol properties scientifically optimised for efficient treatment
- Easy to clean, can be disinfected and autoclaved for absolute hygiene reliability

New package contents with effect from Jan. 1, 2008

Item No.: 078G1007; Control unit with connection cord, international power adapter with three interchangeable adapters, charger with rechargeable batteries, 2 nebulisers (incl. aerosol heads) easycare cleaning tool for aerosol heads, carrying case and nebuliser bag



Handling hints

A quick reference guide to familiarise you with the device. For more complete details, please read and take note of the Instructions For Use.

Parts



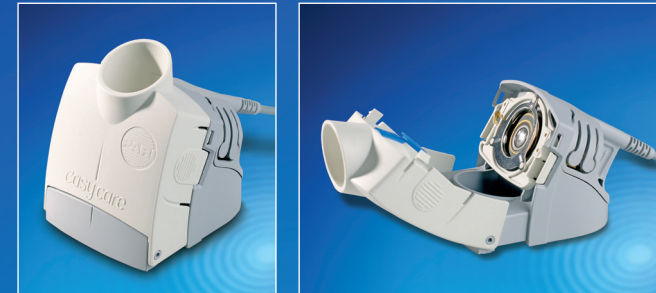
* The aerosol chamber and the medication reservoir are preassembled and cannot be taken apart.

2 nebulisers with spare aerosol heads



eFlow[®]rapid

easycare cleaning tool for aerosol heads



The easycare cleaning tool can help to cut nebulising time in the event of reduced nebulising capacity.

Functional test for the aerosol head



Measure the time taken to nebulise 2.5ml isotonic saline solution (0.9%) without inhalation.:

1. If nebulising takes longer than 4 minutes, the aerosol head should be cleaned with the easycare cleaning tool.
2. If nebulising takes longer than 5 minutes, the aerosol head should be replaced.



Hints on hygiene

A quick reference guide to familiarise you with the device. For more comprehensive details, please read and take note of the Instructions For Use.

4. Hygiene at home

4.1. Clean

Take the nebuliser apart completely. Wash immediately with warm tap water and washing up liquid.



4.2. Disinfect

Disinfect the nebuliser parts and the aerosol head for about 15 min. in the steam steriliser, or boil thoroughly in distilled water.



4.3. Dry

Allow to air dry (for at least 4 hours).



4.4. Store

Store hygienically in a clean, dry place.

The Steam Disinfector

The PETRA® and NUK® disinfectors are recommended in the eFlow® rapid Instructions For Use because these devices have been tested by PARI for their effectiveness, with specific regard to the standard of hygiene they assure in domestic nebuliser disinfection. For complete information on handling and use, please refer to the product information published by their respective manufacturers.

e.g., PETRA® DI 6.00 disinfectant with automatic drying cycle



e.g. NUK® vaporisator



Ordering information is available from
PARI GmbH, Spezialisten für effektive Inhalation
Moosstr. 3, D-82319 Starnberg
PARI Service Center: 0049 (0) 8151/279-279
E-mail: info@pari.de • www.pari.de



For information on all aspects of cystic fibrosis and additional notes on hygiene, contact Mukoviszidose e.V., or simply visit www.muko.info

Local distributor:

eFlow[®] rapid

Handling & Hygiene
Patient Information

& fast therapy & an easier life



©2007 PARI Pharma GmbH 178D0037 12/07

PARI Pharma
Advancing Aerosol Therapies

